

H TIMING PULLEYS

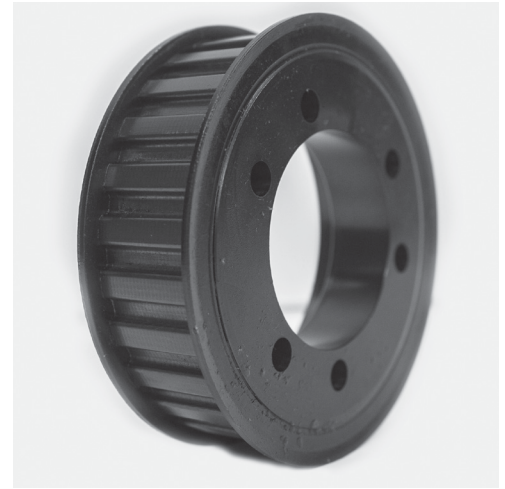
0.500" Trapezoidal Pitch

For 1" Wide Belts

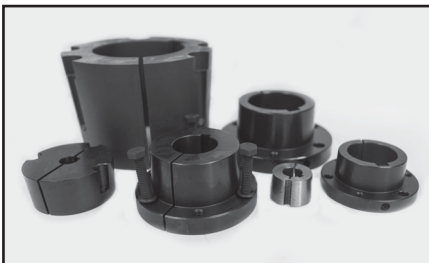
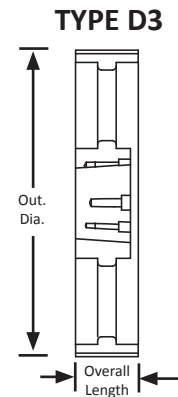
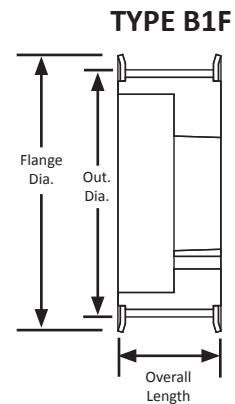
Iron

Black Oxide Plating

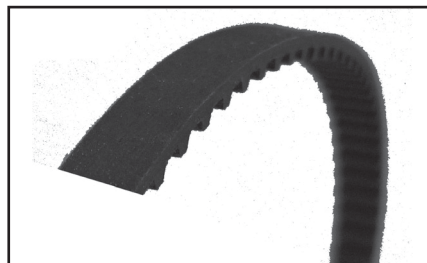
QD® Style



Part Number	No. of Teeth	Type	Pitch Dia. (in)	Out. Dia. (in)	Flange Dia. (in)	Bushing	Face Width (in)	Overall Length (in)
QD33H100	33	B1F	5.254	5.198	5.320	SK	1.312	1.312
QD34H100	34	B1F	5.411	5.357	5.959	SK	1.312	1.312
QD35H100	35	B1F	5.573	5.516	5.959	SK	1.312	1.312
QD36H100	36	B1F	5.730	5.676	5.959	SK	1.312	1.312
QD37H100	37	B1F	5.884	5.835	6.375	SK	1.312	1.312
QD38H100	38	B1F	6.048	5.994	6.600	SK	1.312	1.312
QD39H100	39	B1F	6.207	6.153	6.600	SK	1.312	1.312
QD40H100	40	B1F	6.366	6.312	6.600	SK	1.312	1.312
QD41H100	41	B1F	6.525	6.471	6.772	SK	1.312	1.312
QD42H100	42	B1F	6.685	6.631	7.231	SK	1.312	1.312
QD43H100	43	B1F	6.844	6.790	7.231	SK	1.312	1.312
QD44H100	44	B1F	7.003	6.949	7.231	SK	1.312	1.312
QD45H100	45	B1F	7.162	7.108	7.575	SK	1.312	1.312
QD46H100	46	B1F	7.321	7.267	7.575	SK	1.312	1.312
QD48H100	48	B1F	7.639	7.585	7.867	SK	1.312	1.312
QD60H100	60	D3	9.549	9.495	-	SF	1.312	1.312
QD72H100	72	D3	11.459	11.405	-	SF	1.312	1.312
QD84H100	84	D3	13.369	13.315	-	SF	1.312	1.312
QD96H100	96	D3	15.279	15.225	-	SF	1.312	1.312
QD120H100	120	D3	19.099	19.045	-	SF	1.312	1.312
QD156H100	156	D3	24.878	24.774	-	SF	1.312	1.312



For matching QD® bushings,
see page 372.



For matching H pitch belts,
see page 199.